



FISH

Toothfish
Pangasius
Salmon
Red Drum
Others

TOOTHFISH



Headless Gutted Chilean Seabass

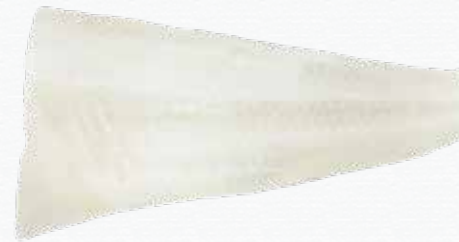
Scientific Name: Dissostichus Eleginoides

Type: Frozen

Packaging: IWP

Size(s): 2/3, 3/4, 4/6, 6/8 kgs/pcs

Origin: France, UK



Cod Seabass Fillet

Scientific Name: Dissostichus Eleginoides

Type: Frozen

Packaging: IVP

Size(s): 1/2, 2/3, 3/4, 4/6 kgs/pc

Origin: France, UK



PANGASIOUS



Whole Pangasius Butterfly Cut

Scientific Name: Pangasius Hypophthalmus

Type: Frozen

Packaging: IVP, 10kg

Size(s): 500/650 grs/pc

Origin: Vietnam



Sutchi Fillet

Scientific Name: Pangasius Hypophthalmus

Type: Frozen

Packaging: IQF, 6.25kg

Size(s): 170/220, 220/270, 300/Up grs/pc

Origin: Vietnam

Whole Gutted Pangasius

Scientific Name: Pangasius Hypophthalmus

Type: Frozen

Packaging: IWP, 10kg

Size(s): 800/1000 grs/pc

Origin: Vietnam





Salmon Sliced (Ready-to-Eat)

Scientific Name: Salmo Salar

Type: Frozen

Packaging: 80g

Size(s): 7/9 g/pc

Origin: Norway

Smoked Salmon Sliced

Scientific Name: Salmo Salar

Type: Frozen

Packaging: 70g

Size(s): 6/8 g/pc

Origin: Norway

Smoked Salmon Trout Sliced

Scientific Name: Onocorhynchus Mykiss

Type: Frozen

Packaging: 70g

Size(s): 6/8 g/pc

Origin: Norway

SALMON



RED DRUM



Firm white flesh with delicate flavor. A versatile fish suitable for all preparations both raw and cooked. Can be grilled, braised, fried or used in hotpot.

The black spot on the tail is a distinguishing feature. Body is usually shiny grey, bronze or slightly bronze red depending on the time of year.



Red Drum Fillet

Scientific Name: Sciaenops Ocellatus

Type: Frozen

Packaging: IVP, 10kg

Size(s): 600/800, 800/1000, 1000/2000 grs/pc

Origin: Mauritius

Fully traceable, vertically integrated.

No vaccinations, no hormones, no additives.

Farm to processing at the same site.

Certifications: Halal, HACCP, Global GAP, Friends of the Sea, FDA approved.

SILVER FISH



Silver Fish

Scientific Name: *Salanx Chinensis*

Type: Frozen

Packaging: 20 x 1kg

Size(s): 8/10 - 10/12 cm/pc

Origin: China



1002 Tai Seng Ave #01-2552 Singapore 534409

Tel: +65 6747 9701 | WhatsApp: +65 8318 5586

info@hongseafood.com

www.hongseafood.com