



# PRODUCT CATALOGUE

2024



# TABLE OF CONTENT

## SHRIMP

Black Tiger  
Vannamei Shrimp  
Red Sea Prawn  
Others

01

## FISH

Toothfish  
Pangasius  
Salmon  
Red Drum  
Others

02

## MOLLUSC

Scallop  
Clam  
Oyster  
Others

03

## CRUSTACEAN

Crab Meat

04

## CEPHALOPOD

Cuttlefish

05

## VALUE - ADDED

Kabayaki  
Broth & Oil

06

## FUNCTIONAL FOOD

Bird's Nest  
Chicken Essence  
Milkfish Essence  
Drinks

07



# EMBRACING *Sustainability*

We are dedicated to offering responsibly sourced seafood and are actively working towards full sustainability in our product range:

- We are MSC and ASC certified. Look for the ASC logo and MSC ecolabel
- We are continuously expanding our selection of certified sustainable options
- Our goal is to protect marine ecosystems and support responsible fishing practices
- We are committed to improving traceability and promoting sustainable methods

By choosing our products, you're supporting our journey towards a more sustainable seafood industry.



**ASC-C-01014**

ASC certified as responsibly farmed. [www.asc-aqua.org](http://www.asc-aqua.org)



**MSC-C-55122**

From an MSC certified sustainable fishery. [www.msc.org](http://www.msc.org)



# SHRIMP

Black Tiger  
Vannamei Shrimp  
Red Sea Prawn  
Others



# BLACK TIGER PRAWN



## Raw Head On Shell On Black Tiger Prawn

*Scientific Name: Penaeus Monodon*

Type: Frozen

Packaging: Semi-IQF, 10 x 1kg

Size(s): 4/6 - 31/40 pcs/box

Origin: Asia

RAW



## Raw Peeled Tail Off Butterfly Cut Black Tiger Prawn

*Scientific Name: Penaeus Monodon*

Type: Frozen

Packaging: IQF, 10 x 1kg

Size(s): 8/12 - 41/50 pcs/lb

Origin: Asia

Sourced from the waters of Asia, Tiger Prawns are characteristically bold with a firm and noticeable 'snappy' texture. These prawns offer a succulent bite and a sweeter, richer taste compared to other shrimp varieties. They are quickly frozen to ensure maximum freshness. They are perfect for grilling, steaming, or baking. Enjoy the deliciousness of Tiger Prawns in your favorite dishes!



## Raw Peeled Tail On Black Tiger Prawn

*Scientific Name: Penaeus Monodon*

Type: Frozen

Packaging: IQF, 10 x 1kg

Size(s): 8/12 - 71/90 pcs/lb

Origin: Asia



## Raw Peeled Tail Off Black Tiger Prawn

*Scientific Name: Penaeus Monodon*

Type: Frozen

Packaging: IQF, 10 x 1kg

Size(s): 8/12 - 71/90 pcs/lb

Origin: Asia



**Cooked Head On Shell On  
Vannamei Shrimp**

*Scientific Name: Litopenaeus Vannamei*

Type: Frozen

Packaging: Semi-IQF, 10 x 1kg

Size(s): 26/30 - 51/60 pcs/kg

Origin: Asia



# VANNAMEI SHRIMP



# VANNAMEI SHRIMP



## Raw Peeled Tail Off Vannamei Shrimp Meat

*Scientific Name: Litopenaeus Vannamei*

Type: Frozen

Packaging: IQF, 10 x 1kg

Size(s): 8/12 - 100/200 pcs/lb

Origin: Asia

RAW



## Raw Peeled Tail On Vannamei Shrimp Meat

*Scientific Name: Litopenaeus Vannamei*

Type: Frozen

Packaging: IQF, 10 x 1kg

Size(s): 8/12 - 100/200 pcs/lb

Origin: Asia



## Raw Peeled Tail Off Butterfly Cut Vannamei Shrimp

*Scientific Name: Litopenaeus Vannamei*

Type: Frozen

Packaging: IQF, 10 x 1kg

Size(s): 8/12 - 41/50 pcs/lb

Origin: Asia



## Raw Peeled Tail Off Vannamei Shrimp

*Scientific Name: Litopenaeus Vannamei*

Type: Frozen

Packaging: 20 x 500g

Size(s): 31/40 - 71/90 pcs/lb

Origin: Asia



### Raw Head On Shell On Red Sea Prawn

Scientific Name: *Litopenaeus Vannamei*

Type: Frozen

Packaging: Semi-IQF, 6 x 2kg

Size(s): 30/40 - 50/60 pcs/kg

Origin: Saudi Arabia

## RED SEA PRAWN

Our vertically integrated, non-intensive shrimp cultivation utilizes clean, pristine sea water fed directly from Red Sea and benefits from unique desert conditions and high saline environmental conditions, giving our prawns superior quality and delectable flavour.

Our prawns are now certified sustainable by the Aquaculture Stewardship Council.

# DRIED SAKURA SHRIMP



Also known also as Cherry Blossom Shrimp as they have a similar colour to cherry blossoms. Caught from deep sea in Taiwan, one of two places in the world where the species are found. Only whole, sashimi-grade Sakura Ebi is selected for processing.

Using Low Temperature Drying, our Sakura Ebi is placed in a machine to be gently dried. Low Temperature Drying can better preserve the aroma, colour and natural sweetness of Sakura Ebi as compared to traditional outdoor drying and heated-air drying. Our Sakura Shrimp is produced in a controlled environment and so the hygiene standard is well controlled as compared to outdoor drying.

These deliciously sweet Sakura Ebi has a light crispy texture, and is suited for a variety of cuisines. They can be added to your pasta, salad and fried rice. A natural food source with high nutrition value and calcium content. Adds colour to enhance visual appeal.

## Sakura Ebi

*Scientific Name: Lucensosergia Lucens*

Type: Dried

Packaging: 36 x 100g

Size(s): -

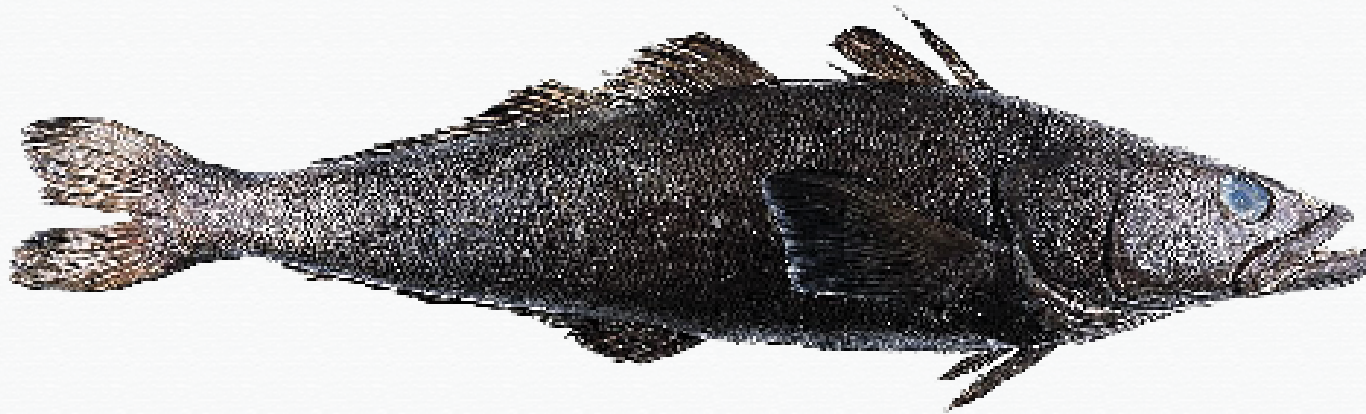
Origin: Taiwan



# FISH

Toothfish  
Pangasius  
Salmon  
Red Drum  
Others

# TOOTHFISH



## Headless Gutted Chilean Seabass

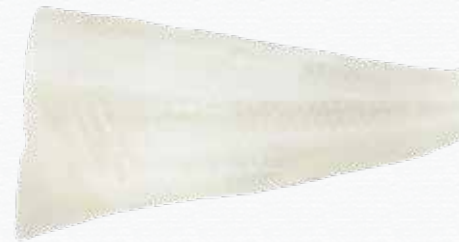
*Scientific Name: Dissostichus Eleginoides*

**Type:** Frozen

**Packaging:** IWP

**Size(s):** 2/3, 3/4, 4/6, 6/8 kgs/pcs

**Origin:** France, UK



## Cod Seabass Fillet

*Scientific Name: Dissostichus Eleginoides*

**Type:** Frozen

**Packaging:** IVP

**Size(s):** 1/2, 2/3, 3/4, 4/6 kgs/pc

**Origin:** France, UK



# PANGASIOUS



## Whole Pangasius Butterfly Cut

*Scientific Name: Pangasius Hypophthalmus*

Type: Frozen

Packaging: IVP, 10kg

Size(s): 500/650 grs/pc

Origin: Vietnam



## Sutchi Fillet

*Scientific Name: Pangasius Hypophthalmus*

Type: Frozen

Packaging: IQF, 6.25kg

Size(s): 170/220, 220/270, 300/Up grs/pc

Origin: Vietnam

## Whole Gutted Pangasius

*Scientific Name: Pangasius Hypophthalmus*

Type: Frozen

Packaging: IWP, 10kg

Size(s): 800/1000 grs/pc

Origin: Vietnam





### **Salmon Sliced (Ready-to-Eat)**

*Scientific Name: Salmo Salar*

Type: Frozen

Packaging: 80g

Size(s): 7/9 g/pc

Origin: Norway

### **Smoked Salmon Sliced**

*Scientific Name: Salmo Salar*

Type: Frozen

Packaging: 70g

Size(s): 6/8 g/pc

Origin: Norway

### **Smoked Salmon Trout Sliced**

*Scientific Name: Onocorhynchus Mykiss*

Type: Frozen

Packaging: 70g

Size(s): 6/8 g/pc

Origin: Norway



FISH



## Norwegian Salmon

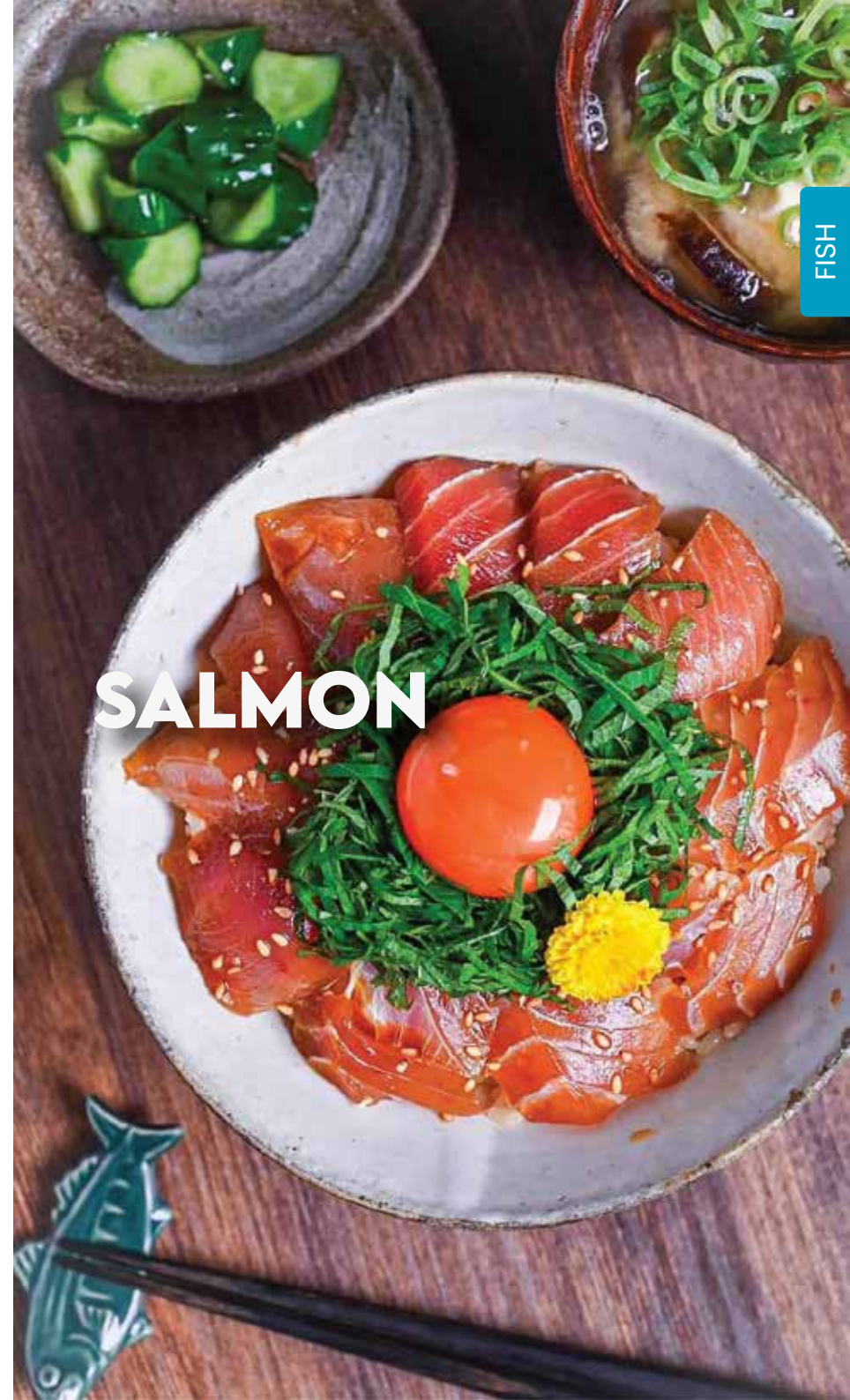
*Scientific Name: Salmo Salar*

Type: Frozen

Packaging: 80g

Size(s): 7/9 g/pc

Origin: Norway



# SALMON

FISH

# RED DRUM



Firm white flesh with delicate flavor. A versatile fish suitable for all preparations both raw and cooked. Can be grilled, braised, fried or used in hotpot.

The black spot on the tail is a distinguishing feature. Body is usually shiny grey, bronze or slightly bronze red depending on the time of year.



## Red Drum Fillet

*Scientific Name: Sciaenops Ocellatus*

Type: Frozen

Packaging: IVP, 10kg

Size(s): 600/800, 800/1000, 1000/2000 grs/pc

Origin: Mauritius

Fully traceable, vertically integrated.

No vaccinations, no hormones, no additives.

Farm to processing at the same site.

Certifications: Halal, HACCP, Global GAP, Friends of the Sea, FDA approved.

# SILVER FISH



## Silver Fish

Scientific Name: *Salanx Chinensis*

Type: Frozen

Packaging: 20 x 1kg

Size(s): 8/10 - 10/12 cm/pc

Origin: China



# MOLLUSC

Scallop  
Clam  
Oyster



# SCALLOP



MOLLUSC



## Half Shell Roe On Scallop

*Scientific Name: Patinopecten Yessoensis*

Type: Frozen

Packaging: IQF, 10 x 1kg

Size(s): 7/8 - 10/12 cm/pc

Origin: China



## Scallop Adductor Roe Off

*Scientific Name: Patinopecten Yessoensis*

Type: Frozen

Packaging: IQF, 10 x 1kg

Size(s): 10/20 - 60/80 pcs/lb

Origin: China



# SCALLOP



## Scallop Adductor Roe Off

*Scientific Name: Ylistrum Balloti*

Type: Frozen

Packaging: Block, 6 x 2kg / IQF, 8 x 1kg / IQF, 20 x 300g

Size(s): 10/20 - 40/60 pcs/lb

Origin: Australia

Enjoyed by customers for more than 40 years, Far West Scallops are famous for their rich, sweet, slightly salty flavour and pleasantly firm texture.

Our Wild Caught Scallops, from the pristine waters of Western Australia, are now available in half shell and certified sustainable by the Marine Stewardship Council.





# SCALLOP



## Dried Scallop

*Scientific Name: Patinopecten Yessoensis*

Type: Dried

Packaging: 10 x 1kg

Size(s): 500 - 1500 pcs/kg

Origin: China

No preservatives or additives, single ingredient product.

7x longer than usual dried scallop for a higher concentrate of natural sweetness.

Employ Japanese processing technique – naturally dried.

Long processing time of 21 days.



# CLAM



MOLLUSC



## Top Shell Slice

Scientific Name: *Chicoreus Ramosus*

Type: Frozen

Packaging: 25 x 600g

Size(s): -

Origin: Taiwan

Hint of sweetness and a nice chewy texture.

A versatile ingredient especially for soup.



## Atlantic Mirugai

Scientific Name: *Panopea Bitruncata*

Type: Frozen

Packaging: 70 x 200g

Size(s): -

Origin: Taiwan

Also known as the Atlantic geoduck clam, this seafood features a uniquely chewy texture and a mild, sweet flavor. It's best enjoyed as a topping for salads and Yu Sheng, or incorporated into Japanese dishes. Quick frying also enhances its delightful taste.



# OYSTER



## Oyster Meat

*Scientific Name: Crassostrea Gigas*

Type: Frozen

Packaging: IQF, 10 x 1kg

Size(s): S,M,L

Origin:

Individually quick frozen to maintain the high quality

Vacuum packed to prolong freshness

Great for oyster omelette, mee sua and oyster cake

# ABALONE



## Canned Abalone

*Scientific Name: Haliotis discus*

Type: Canned

Packaging: 24 x 425g

Size(s): 6P - 28P

Origin: China

A close-up photograph of a cooked crab, likely a soft-shell crab, resting on a dark, wet wooden surface. The crab's shell is a vibrant orange-red color, and its legs are also cooked to a similar hue. The background is dark and textured, with some water droplets visible on the wood.

# CRUSTACEAN

Crab Meat  
Soft Shell Crab  
Lobster  
Crayfish



# CRAB MEAT

Our crab meat comes in a variety of types: Colossal, Jumbo Lump, Super Lump, Claw. Sourced from the wild, each batch is hand-picked and pasteurized to ensure the highest quality and flavor. Enjoy the rich taste of our premium crab meat in your favorite dishes!



CRUSTACEAN



## Ocean Best Crab Meat

*Scientific Name: Portunus Haanii*

Type: Pasteurized

Packaging: 12 x 454g

Size(s): Colossal, Jumbo Lump, Super Lump, Claw

Origin: China



## Ocean Finest Crab Meat

*Scientific Name: Portunus Haanii*

Type: Pasteurized

Packaging: 12 x 454g

Size(s): Colossal, Jumbo Lump, Super Lump, Claw

Origin: China





### Soft Shell Crab

*Scientific Name: Scylla Serrata*

Type: Frozen

Packaging: IWP, 10 x 1kg

Size(s): 80/100, 100/120 grs/pc

Origin: Asia

## SOFT SHELL CRAB

Our crabs are responsibly sourced from both wild waters and sustainable farms in Asia. We use large traps specifically designed to avoid capturing smaller crabs under 50g, ensuring the sustainability of the population. They are fed a diet of fresh fish to enhance their flavor. Each crab is carefully hand-picked and individually packed to maintain its best quality.

CRUSTACEAN



# LOBSTER



## Lobster Whole

*Scientific Name: Panulirus homarus*

Type: Frozen

Packaging: 10kg

Size(s): 100/150 - 500/600 grs/pc

Origin: Vietnam



## Lobster Half-Cut

*Scientific Name: Panulirus homarus*

Type: Frozen

Packaging: 10kg

Size(s): 50/75 - 250/300 grs/pc

Origin: Vietnam



CRUSTACEAN



### **Baby Lobster**

*Scientific Name: Cherax quadricarinatus*

**Type:** Frozen

**Packaging:** 10 x 1kg

**Size(s):** 25/27 pcs/kg

**Origin:** Indonesia



A whole squid is shown on a dark, textured surface, surrounded by several ice cubes. To the left of the squid's head, there are two lemon slices and a small sprig of green herbs. Above the lemon slices, there is a whole garlic bulb and a few individual garlic cloves. The squid's body is a reddish-pink color with a fine, speckled texture. Its tentacles are visible at the bottom left, and its head is at the bottom left. The overall composition is a still life, likely for a food or seafood presentation.

# CEPHALOPOD

Cuttlefish



# CUTTLEFISH



Our Cuttlefish are sourced from Asian waters. Known for its tender and savory meat, Cuttlefish also has a subtly sweet taste and smooth texture. While it can be enjoyed raw, it's most often cooked to enhance its flavors.



## Cuttlefish Fillet Flower Cut

*Scientific Name: Sepia Lycidas*

Type: Frozen

Packaging: IQF, 10 x 1kg

Size(s): 60/80, 80/120

Origin: Vietnam



## Baby Cuttlefish

*Scientific Name: Sepia Lycidas*

Type: Frozen

Packaging: IQF, 10 x 1kg

Size(s): 20/40 - 60/80 pcs/kg

Origin: Asia



# VALUE ADDED

Kabayaki  
Broth & Oil



# KABAYAKI



## Kabayaki Squid

*Scientific Name: Uroteuthis Chinensis*

Type: Frozen

Packaging: 25 x 150g

Size(s): 150 grs/pc

Origin: Taiwan



## Kabayaki Tilapia

*Scientific Name: Oreochromis Niloticus*

Type: Frozen

Packaging: 25 x 250g

Size(s): 50/60 grs/pc

Origin: Taiwan



# BROTH & OIL



## Lobster Broth

*Scientific Name: Homarus Americanus*

Type: Frozen

Packaging: 15 x 1kg

Size(s): -

Origin: Taiwan



## Lobster Oil

*Scientific Name: Homarus Americanus*

Type: Frozen

Packaging: 15 x 1kg

Size(s): -

Origin: Taiwan

A still life photograph of two red ceramic bowls filled with oatmeal, topped with a piece of chicken. The bowls are on a wooden surface. In the background, there are small white flowers, some red goji berries, and a blue plaid cloth. A white ceramic spoon lies on the wooden surface next to the bowls. The text 'FUNCTIONAL FOOD' is overlaid in large white letters.

# FUNCTIONAL FOOD

Bird's Nest  
Chicken Essence  
Fish Essence  
Drinks



### Square Bird's Nest

*Scientific Name: Aerodramus Fuciphagus*

Type: Dried

Packaging: 9 x 6g

Size(s): 6 grs/pc

Origin: Vietnam



### Rose Bird's Nest

*Scientific Name: Aerodramus Fuciphagus*

Type: Dried

Packaging: 10 x 3.6g

Size(s): 3.6 grs/pc

Origin: Vietnam



## BIRD'S NEST

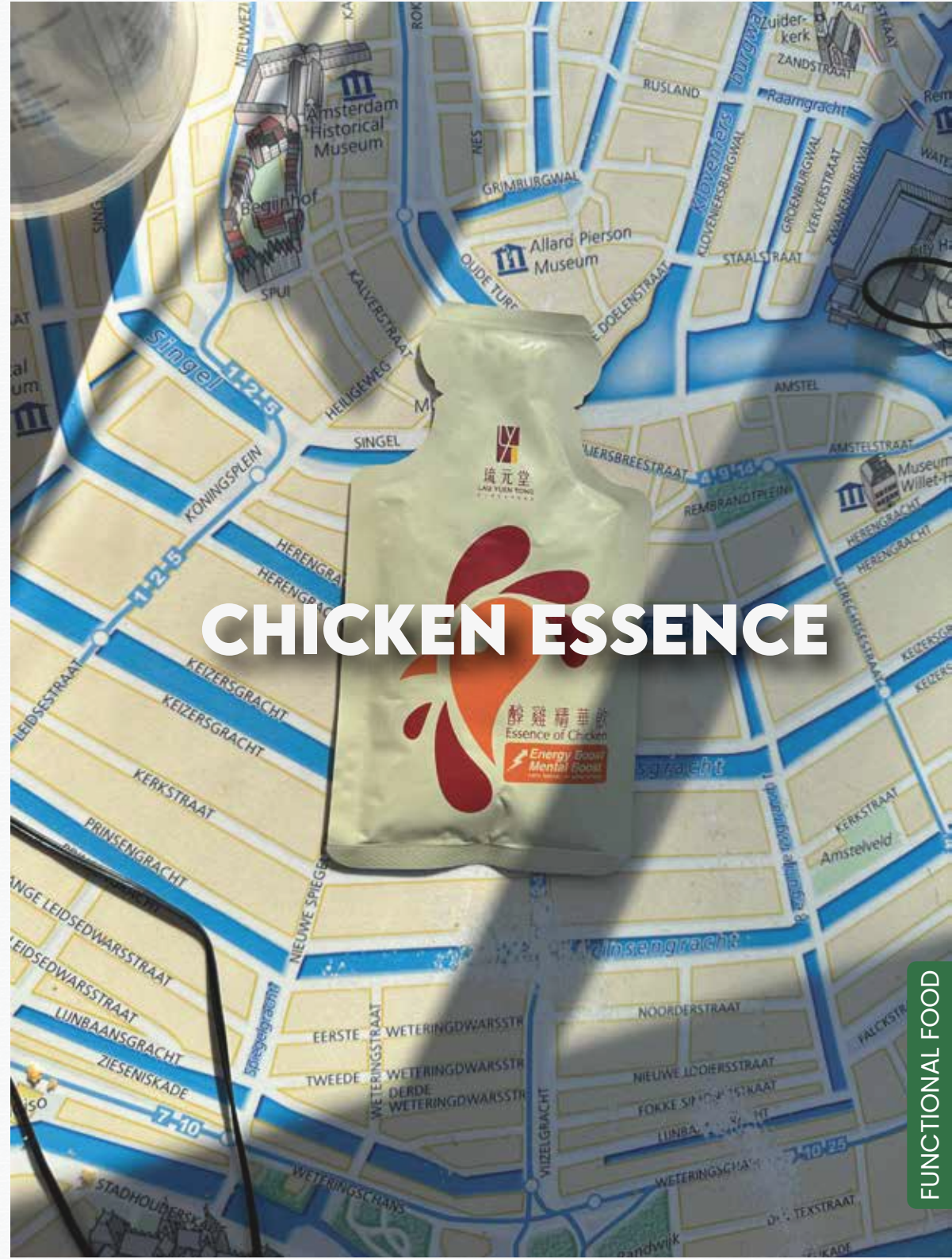
Our proudest innovation in enabling a hassle-free way to prepare your bird nest. Through our dedication to R&D, we took away the trouble of soaking and cleaning the impurities. You can now enjoy a bowl of comforting bird's nest the way you like it in 30 minutes!

All you have to do is to put a token in boiling water, together with any other ingredients you like. Stew for 30 minutes and...Voila! You are good to go.



### Lau Yuen Tong Chicken Essence

Type: Ambient  
Packaging: 7 x 55ml  
Size(s): 55 ml/pkt  
Origin: Taiwan





### Milkfish Essence

Type: Ambient

Packaging: 15 x 60ml

Size(s): 60 ml/pkt

Origin: Taiwan



# FISH ESSENCE



# DRINKS



## Rooibos Tea

*Scientific Name: Aspalathus Linearis*

Type: Ambient

Packaging: 20 x 20g

Size(s): 20 grs/pkt

Origin: South Africa



1002 Tai Seng Ave #01-2552 Singapore 534409

Tel: +65 6747 9701 | WhatsApp: +65 8318 5586

[info@hongseafood.com](mailto:info@hongseafood.com)

[www.hongseafood.com](http://www.hongseafood.com)